

## NiCr(80-20) Cronix planar target specifications

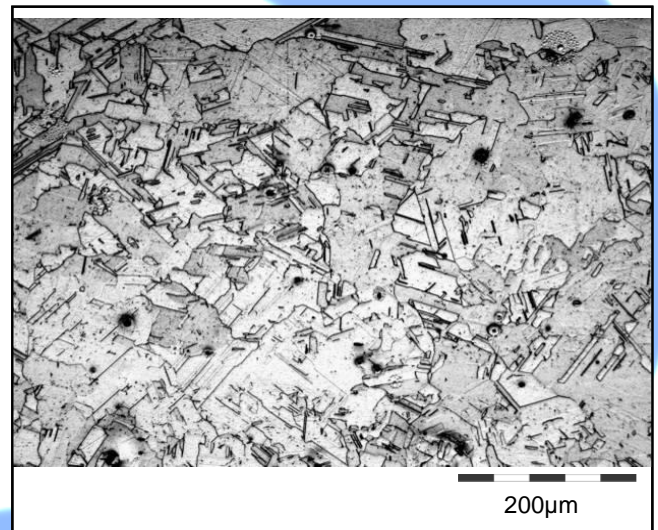
Production : Casting, annealing, hot rolling + heat treatment

Targets : Each casting is identified with a number, chemical analysis and grain structure

Grain size : Following EN ISO 643 grain size < 100  $\mu\text{m}$

Typical chemical analysis

Element	%
Ni	78,3
Cr	19.6
C	0,03
Mn	0,31
S	0,002
Si	1,23
Cu	<0.01
Fe	0,3
P	0,002
Al	0,12
Co	<0,01



GRADEL s.à.r.l.  
6, ZAE le Triangle Vert  
L-5691 ELLANGE  
[www.gradel.lu](http://www.gradel.lu)

Contact :  
Patrick Lefèvre  
Responsible  
Sputtering targets, R&D  
Mobile : +352 661 39 00 54  
Fax : +352 39 88 57  
E-Mail : [p.lefevre@gradel.lu](mailto:p.lefevre@gradel.lu)