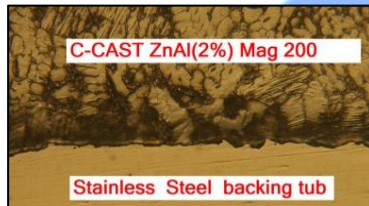


C-Cast rotatable targets

Production :

Vertical Continuous casting around SST backing tube with bonding layer.
Chemical link with backing tube is guaranteed



**WITH CONTINUOUS
CASTING PATENTED
PROCESS**



Targets :

Rotatable from 1 m to 4 m long with or without dog bone.
Wall thickness is adaptable up to 14 mm with backing tube
OD=133 mm.



Advantages :

- Excellent thermal transfer between targets material and backing tube thanks to chemical link with the backing tube → more power on the target
- Homogeneous grain size along all target's length thanks to continuous casting process
- Tube refilling with non sputtered metal recovery
- Casting ensures 100% density, and controlled metal/alloy composition
- Temperature feedback and automation of the process allow a fine control and a repeatable process
- Control of the backing tube roundness and straightness after each production step



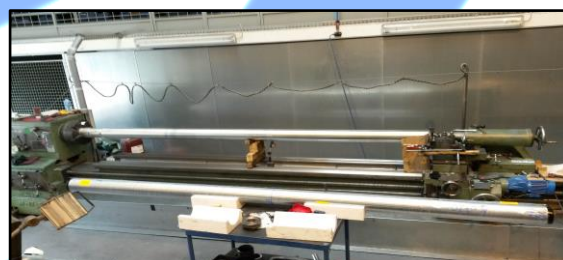
Materials available

- Sn
- ZnAl (0,5 to 2%)
- ZnSn (52-48)



Materials available soon

- Other low melting point alloys are possible



GRADEL s.à.r.l.
6, ZAE le Triangle Vert
L-5691 ELLANGE
www.gradel.lu

Contact :
Patrick Lefèvre
Responsible
Sputtering targets, R&D
Tel. : +352 39 00 44 54
Mobile : +352 661 39 00 54
Fax : +352 39 88 57
E-Mail : p.lefevre@gradel.lu